



FROM THE PRINCIPAL

Dear Parents,

Well the weeks run fast and by quickly and we are half-way through the term.

St Dominic's Day Celebrations:

Last Friday we celebrated St Dominic's Day in our special mufti colours – black and white – and it was great to see the students looking great as they came in to School. It was a quieter and Covid safe event this year without all the bells and whistles of jumping castles and shared food and so on. Each class conducted a special liturgy to mark the occasion. The Creative Artists were able to go into each class and create fun with balloons and activities which all seemed to enjoy. Class teams were able to provide a special lunch as per guidelines which the students enjoyed too. I hope you enjoy the photos on page 2.

Satellite Program:

As parents you would have received a letter recently outlining our enhanced direction for our Satellite program. This has been as a consequence of the Catholic Schools Office approving our proposal for two classes at Prouille to be made available as a dedicated satellite for St Lucy's. This is very exciting news and allows us to expand this kind of transitional experience within a mainstream setting for even more of our students as they test the waters to see if they are ready for a less restrictive setting in their on-going educational journey. I know from your feedback that many parents are very excited about these new possibilities for their children as we are too as educators and we thank the CSO for their support.

National Survey of Parent Voice in Special Schools:

I encourage you to take time to complete this important survey to have your voice heard within the Disability Royal Commission. As some may know, the voices of inclusion are particularly evident in the submissions to the Commission so far and are

MOVING TOWARDS **K-12**
21 August 2020

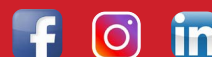
TERM 3

Friday 25 September
Term 3 Concludes



Ph: 9487 1277

Principal: Mr David Raphael
www.stlucys.nsw.edu.au



arguing that there is no place for Special Schools in this educational space. You may agree or disagree with those voices. Nevertheless, it is important for a balanced representation of a wide range of views to be heard by the Commission and not just one advocacy group's viewpoint. Consequently, it is even more important that all Special Needs voices be heard so the Commission can be informed of the diverse view of parents in this sector. Please take the time to complete the survey via the link:

https://acu.qualtrics.com/jfe/form/SV_0pGAoekNmVR7VB3

COVID Restrictions:

The latest revised advice from NSW Health has meant that we are not now able to continue conducting Morning Song all together on Monday

morning to start the week or our Friday Assembly to end the week. Additionally, staff meetings have had to be significantly modified as well.

NSW Health now require each student who has flu like symptoms to stay at home and get immediately tested no matter how slight the symptoms may be. There is then the requirement for parents to inform the school of the results and send the text from NSW Health to the School to confirm the result. Thank you for your continuing help in promoting good hygiene and keeping your child away from school and getting tested and informing Terry or Kathleen of the results. Stay safe and well.

David Raphael
Principal





Mary, our Mother, your total giving of yourself reminds us that we hold in trust from God our Father all our accomplishments and talents and gifts - trusted as we are to offer them in his service, and bring happiness and well-being to all.

Your "Yes" to God's invitation to be the mother of his Son reminds us that prayer is not just words but is from the heart.

We ask you to pray to Jesus for us that the Holy Spirit may live fully in us, too, so that we may be prepared to join you in saying "Yes" to God our Father, so as to ensure God's love is offered to all, especially the most vulnerable and ignored. Amen.

On the 15th August, it was the Feast of the Assumption within the Catholic Tradition. This is when Mary was assumed, body and soul, into Heaven, as recognition of the faith she held in God and the model of discipleship she provided to others during her time on earth.

St Dominic held much love and devotion to Mary throughout his life. Often the rosary beads and the white lily are common symbols associated with St Dominic, and this strengthens the belief that he taught his followers about the example of Mary and was guided by her faith within his own practice and journey.

Mothers hold special significance within our lives and it is in Mary that we pray for the guidance, love and support of our mothers who often give of their all.

Celebrating St Dominic's Day: The staff and students of St Lucy's celebrated the Feast Day of St Dominic, our school's patron saint last Friday. Usually, this celebration involves jumping castles, live performances by the Knox Pipe Band and MVP Group, mini-concerts, face painting, etc. Evidently, with the need to adhere to COVID-19 guidelines and restrictions, we had to re-think the way we celebrated St Dominic's Day this year, whilst still ensuring it was a joyful and memorable day for all.

Judging by the photos below, it looks like we achieved this with a class based liturgy, mufti day, visits from our Creative Artists, party type games, a special lunch and a pre-recorded performance by the Knox MVP Group all on offer!

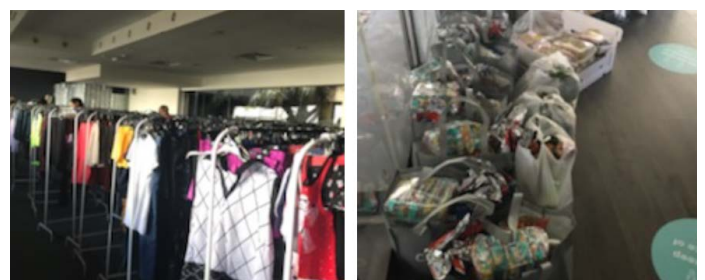
A massive thank you to all the staff and students for getting involved, in particular Mrs Pinker, Miss Theresa, Mrs Picone, Miss Anneleise and Mr Simon for helping to ensure the coordination and delivery was so smooth!



Celebrating the Baptism of Annabelle, Natasha and Ethan!

Next Tuesday 25th August, Sr Helen and I will join Fr David Ranson at Holy Name Church to witness the Baptisms of Annabelle (Aquarius Class), Natasha (Aquarius Class) and Natasha's younger brother, Ethan. The parents of Annabelle, Natasha and Ethan will also be there to celebrate this very special and significant moment in their faith journey. When Annabelle and Natasha return to school afterwards, they will be able to share in a special class celebration with their Aquarius staff and friends.

C3 Shopping Trip:



This week, a number of our parents accepted the very generous offer from C3 Church, Wahroonga, to attend another free shopping trip. They were provided with some amazing grocery hampers, fresh food hampers, free choice of clothing and accessories, as well as some pre-Christmas requirements! Thank you to Helen and all our friends at C3 Cares Warehouse for all they do for our parents within our school community!

Wishing you peace and blessings!

Vanessa Dillon
Classroom Teacher - REC

Year 8 are raising money!

This term Orion Class is learning about recycling and caring for the planet. We are learning that we **can** make a difference. We decided to make beeswax wraps to sell and are collecting plastic bottles and cans to recycle.

We have a limited amount of beeswax wraps for sale for the price of **\$5 for 2**

All money raised is going to St George School, a K-12 School for students with moderate to severe physical and multiple disabilities. Orion class selected this school so, as Matthew said, "they can have nice things like we have at St Lucy's."

If you would like to purchase some beeswax wraps to support this worthy cause, please email orionteachers@stlucys.nsw.edu.au for more information.





STAR OF THE WEEK AWARD



STAR OF THE WEEK (WEEK 4)

Aquarius	Natasha Wong
Asteroid	Dylan Ainscow
Calypso	Tayla Tobin
Eclipse	All Eclipse Students
Galaxy	David Salsano
Luna	Diesel Grey
Mars	Elijah Dodman
Meteor	Talha Tanzeel

Moon	Sam Nemcich
Nova	Sebastian Murray
Pulsar	Joseph Oh
Saturn	Chris Oppen
Star	Sophie Elder
Stardust	Sydney Cameron
Titan	Luke Di Staso
Venus	Maye Akra

STAR OF THE WEEK (WEEK 5)

AAquarius	Annabelle Zabulic
Asteroid	Holly Clarke
Calypso	Caitlyn Shin
Eclipse	Kinsley Woo
Galaxy	Ruby O'Brien
Luna	Sophia Torbarac
Mars	Jessica Mettam
Meteor	Finlay Jameson

Moon	Daniel Harwood
Nova	Isaac Saade
Pulsar	Ethan Mbereko
Saturn	Pablo Rostirola
Star	Uriel Cheah
Stardust	Bella Tantillo
Titan	Samara Macklin & Karuka Uthayakumaran
Venus	Gabriel Cheah

ST LUCY' SCHOOL UNIFORM UPDATE



Following an increase in price by our suppliers, we will be increasing the price of uniform items from the 1st of September 2020. We do our very best to keep the price of our uniforms as affordable as possible, however this increase is beyond our control.

You can order your child's uniform item via Flexischools.

If you need any assistance please contact me via email patriciam@stlucys.nsw.edu.au

Patricia McCarthy

ENROLMENTS 2021: Kindergarten and Year 7 entry 2021



Our Registrar, Terry Williamson, is in the thick of enrolment season. If you have any friends or family who might be thinking of enrolling their child for 2021, please feel free to give them Terry's details.

Terryw@stlucys.nsw.edu.au or call on 8355 3157/9487 1277.

**RIDE,
RUN,
ROW
OR
WALK
FITNESS
CHALLENGE**

29TH AUGUST-20TH SEPT 2020

VISIT WWW.RIDEWITHRICHTER.ORG FOR FURTHER DETAILS AND REGISTER TODAY

AN EVENT FOR ALL AGES, CHOOSE YOUR SPORT, CHOOSE YOUR DISTANCE, LOG YOUR ACTIVITY AND KMS, IT'S SO EASY !

SUPPORT AJ'S JOURNEY AND BUY A CAP \$20

REGISTER NOW TO SUPPORT ALEX RICHTER'S JOURNEY TO INDEPENDENCE

ALL PROCEEDS FROM THIS EVENT GO DIRECTLY TOWARDS HELPING AJ RIDE AGAIN



Alex Richter pictured below (a student volunteer at St Lucy's in the afternoon Art Program). Sadly he recently sustained spinal injuries from a biking accident, this challenge/fundraiser is to support Alex's journey towards independence.



St Lucy's Volunteers Kirsty Ogilvy and Alex Richter

SATB2-Associated Syndrome

Other names: **Glass syndrome, 2q33.1 deletion/microdeletion/mutation**
FOR PATIENTS & FAMILIES

Features

Individuals with this condition are generally very kind and happy, with the most beautiful smiles you may have ever seen. However, this syndrome significantly affects many areas of development, including speech (absent speech in many or significantly delayed/affected speech), cognition (intellectual disability), fine motor skills, and gross motor skills. They often have palatal abnormalities, including cleft palate or high arched palate, and dental issues, including large teeth. They may also have seizures, sleep difficulties, and growth delays. As the children get older, significant behavioral issues can develop, as well as other medical concerns, such as low bone density.

- S**evere speech and language anomalies
- A**bnormalities of the palate
- T**eeth anomalies
- B**ehavioral issues with or without bone or brain anomalies
- 2** onset before age 2

System	Recommended Initial Evaluations and Treatments (to be shared with your medical team)
Genetic	Initial: SATB2 sequencing with deletion/duplication analysis/array CGH. Treatment: Provide genetic counseling.
Neurological	Initial: <ul style="list-style-type: none"> Consider brain MRI and EEG at baseline if seizures present. Physical therapy evaluation. Occupational therapy evaluation. Consider rehabilitation referral. Treatment: <ul style="list-style-type: none"> Treat seizures if present, neurosurgery referral if enlarged ventricles present. Physical and occupational therapies. Orthotics or mechanical aids.
Psychological & Psychiatric	Initial: Developmental evaluation, neuropsychological evaluation. Treatment: Treat behavioral issues if needed.
Speech & Language	Initial: Speech & language evaluation. Treatment: <ul style="list-style-type: none"> Intensive speech and language therapy with frequent, highly structured sessions aimed at speech apraxia. Augmentative and alternative communication devices.
Craniofacial	Initial: Evaluate for cleft palate/submucous cleft palate. Treatment: Cleft palate/submucous cleft palate repair.
Gastrointestinal	Initial: Assess feeding. Treatment: Special nipples/bottle for cleft palate, feeding education.
Musculoskeletal	Initial: <ul style="list-style-type: none"> Consider bone mineralization evaluation (bone density), from age 5 or sooner if indicated (broken bones). Consider referral to orthopedics. Treatment: Optimize bone mineralization as needed.
Dental	Initial: Dental evaluation. Treatment: Dental/orthodontic management, consider referral to specialized center.
Ophthalmology	Initial: Baseline ophthalmology exam. Treatment: Refractive errors correction/strabismus surgery.

Diagnosis

Genetic tests detect alterations of the SATB2 gene. Alterations of the SATB2 gene may include misspellings (mutations), missing pieces (deletions), or extra pieces (duplications). The SATB2 protein plays an important role in brain and facial development. Most alterations of the SATB2 gene are new in that individual (known as de novo), and the chance of it happening again is low. Your geneticist can provide more information about this.

Resources

For additional medical and scientific information, as well as registry information, please visit www.satb2gene.com.
For more information about the SATB2 Gene Foundation, please visit www.satb2gene.org.
To connect with other families, search for the closed Facebook group "SATB2 Syndrome (2q33.1)".

Additional Resources:
SATB2-Associated Syndrome - GeneReviews®: www.ncbi.nlm.nih.gov/books/NBK458647
Natural history of SATB2-associated syndrome: www.ncbi.nlm.nih.gov/pubmed/29436146

This year marks the 3rd annual SATB2-associated syndrome (SAS) Awareness Day on August 22nd!

SATB2 is a very rare condition, with only 20 cases in Australia and 450 cases worldwide.

SATB2-associated syndrome (2q33.1) affects the SATB2 gene and affects many areas of development, including cleft palate, speech (absent speech in many), feeding, intellectual disability, dental issues, low bone density, sleep difficulties, and behavioural issues.

To learn more about the SATB2 Gene Foundation visit www.satb2gene.org.