



## FROM THE PRINCIPAL

Dear Parents,

### Veritas Lift and Visit by the Coroner:

The Deputy Coroner has now received the NSW police report about the incident at school last November. As part of the coroner's need to investigate the matter and fully understand the police report, she requested to visit the school to view the Veritas lift area. Consequently, the Coroner attended the school before school today with the investigating police and her court officers. It was a brief visit and required the lift hoardings to be removed for the visit and then be reinstated before staff and students arrived at school. This is part of the routine processes the coroner undertakes as part of reaching her findings in particular matters.

For the information of parents, the School is not privy at this stage to the contents of the NSW police report. Of course, once the Deputy Coroner has completed her investigation and assessment, her findings will be made public. We have been advised that the coroner may complete this process by the end of the year at the earliest. As I have indicated previously, I will continue to keep parents informed as this matter continues being investigated and reaches any conclusion.

### Principal for the Morning:

Oscar Hay in Year 10 was the Principal for the Morning on Monday 19 February after his parents won the auction at last year's P&F Trivia Night. Oscar led the Secondary Assembly and presented the Awards to the students for their achievements. He went on to wear his hard hat and high viz vest to visit the Catherine Centre building site and met the Site Manager, Steve. Principal for the Morning, Oscar was very impressed by all the specialised equipment he saw in operation, hardly wishing to get back to his Principal's office. He enjoyed a morning tea in his office and sat at the 'big' chair and then went to visit his class, Seahorse, to tell them all about it and declare his rule for the day: that all students should have the latest Batman movie poster issued to them,



## 23 February 2024

### 2024 DATES - TERM 1

4-8 March 2024 - IEP Week

Tuesday 12 March 2024  
Primary School Open Day #1

Wednesday 13 March 2024  
High School Open Day #1

Wednesday 13 March 2024  
P&F Meeting 6.30pm

Friday 15 March 2024  
High School Swimming Carnival

Tuesday 19 March 2024  
Open Day - Narrabeen

Thursday 21 March 2024  
Harmony Day

Friday 22 March 2024  
Years 1-6 Swimming Carnival

Wednesday 27 March 2024  
Primary School Open Day #2

Thursday 28 March 2024  
Easter Hat Parade

Thursday 4th April 2024  
Class Parents Morning Tea 9.00am-10am

Thursday 4th April 2024  
Men's Evening 6.30pm-8.00pm  
St Edmunds College

Tuesday 9 April 2024  
Twilight Open Day 4.30pm-6.00pm

Friday 12 April 2024  
Term 1 concludes for students

including himself. He then briefly assisted with supervision on the playground with his walkie talkie at the ready before seeing his friends and abandoning his post thus ending his busy morning. Well done Oscar for being such a leader in the making.



### St Aloysius' College Visit:

This week the Principal of St Aloysius' College, Mark Tannock and two of his senior staff visited St Lucy's. They came to see the main campus at Wahroonga and our various activities and facilities and were impressed with all we offer for our students. They are also keen to see some of our satellite classes as they continue to better understand all that we offer here and appreciate the various educational settings of the School. We look forward to where this interest from St Aloysius' College may develop in the future.

### Parent Information Night:

It was great to see so many parents attend the PIN last week. I trust you found it a wonderful opportunity to meet your new class staff team, socialise with other parents and elect your Class Parent. For those families who attended as well as those who were unable to do so, we have since emailed the presentations from both myself on the outworking of the Master Plan and the Catherine Centre construction plus the presentation on Student Wellbeing presented by our Head of Wellbeing Michelle Le Patourel.

### Playground Pledge Appeal in 2024

Thanks to your help in 2023, we are halfway to raising funds for our Playground Pledge. Our inclusive K-12 playground areas will cost in excess of \$500,000 and we need your help in 2024 to benefit every student. Governments do not fund playgrounds. If every family reaches out to their neighbours, friends, work colleagues and sporting groups in asking for their involvement in a fundraising activity or event, such as the City to Surf in August or a Bunnings BBQ or a High Tea we would be grateful for every dollar raised. This year, if each of our 220 families asks for \$100 from 10 people each we would reach a target of \$220,000. Your donation is Tax-Deductible!

Here is the link of the [flyer](#) for you to share with your extended family, work and friendship networks more easily. You can also view the flyer on the following page.



This QR code can be scanned and shared for those wanting to make a tax-deductible donation and make a positive difference in the lives of our students.

We look forward to following the fundraising progress of our whole community and its network. The Playground Pledge Appeal is an important undertaking for the benefit of all students across the whole school.

If you have any questions or need any help with your fundraising, feel free to contact Lana Huntley, Fundraising and Community Manager on 9487 1277 or email: [lanah@stlucys.nsw.edu.au](mailto:lanah@stlucys.nsw.edu.au)

### Primary Assembly

Please note assembly for Primary will be held at 2.00pm on a Wednesday afternoon. If you wish to attend, please meet in reception.

David Raphael  
Principal



### To all St Lucy's families, please join us at our upcoming ST LUCY'S P&F MEETING Wednesday 13 March 6.30pm

We would love to see as many parents as we can at our first P&F meeting of the year on Wednesday 13 March at 6.30pm. The committee also welcomes all new members to assist in organising events and fundraising. Join in person or via this teams link:

Meeting ID: 461 727 823 086      Passcode: JZLUK7



**PARENTS & FRIENDS**



# ST LUCY'S SCHOOL PLAYGROUND PLEDGE

GET YOUR COMMUNITY INVOLVED



1 SCAN THE QR CODE



2 Pledge and make your gift amount

3 Click on "Share cause" to share on Facebook, Twitter, LinkedIn, Email or Copy link AND. Click on "Fundraise for this cause" to share and create your family network gift page

4 Receive your tax deductible receipt

5 Celebrate with your family as you watch your fundraising page grow towards our goal!

DONATE VIA THE QR CODE OR BY VISITING

<https://www.givenow.com.au/stlucysplaygroundpledge>

You can also make your tax deductible gift over the phone by calling our Fundraising and Community Manager Lana Huntley on (02) 9487 1277

# ST LUCY'S SCHOOL

## PLAYGROUND PLEDGE



### High School Development: Catherine Centre

In July 2024 our state-of-the-art, architect designed Catherine Centre classrooms and specialist High School facilities will be opened at the Wairoa campus. This includes 12 classrooms with adjacent designated Year 7-12 adolescent centred recreational spaces as well as refurbished whole school playground spaces. At St Lucy's we believe our classrooms and related playgrounds are essential learning environments where your children, our students, form friendships and connections for life.

As government funding does not fund playgrounds, we seek your help.

Your child deserves the best most sensory and exciting play spaces to engage with others, learn in their own safe environment, explore and regulate.

The new K-12 playground areas will importantly be accessible to both our Senior and Primary students: including new swings, new climbing spider frame, new wheelchair accessible trampolines, a basketball hoop with Softfall, outdoor dance stage area, a covered walkway link to the whole school, and restored bike track and related fencing. With construction costs and Softfall and Astroturf areas, the total estimated cost is in excess of \$500,000.

Please join us, together with your family network of grandparents, aunts, uncles, neighbours, friendship groups and work colleagues. Pledge as much support as you and they can to directly benefit your child now and in the future, as they continue their educational journey with St Lucy's to Year 12.

The Catherine Centre is situated on the campus so that our children have easy access to the oval, the bike track and swimming pool. As part of this project a renovation of an existing facility will accommodate a Vocational Education Training facility for Hospitality and adjacent dining room.

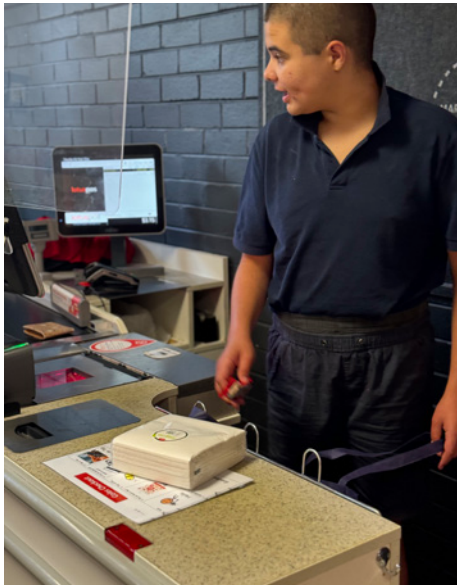
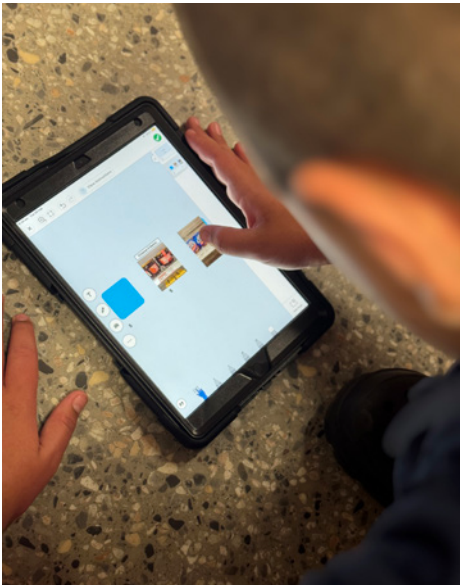
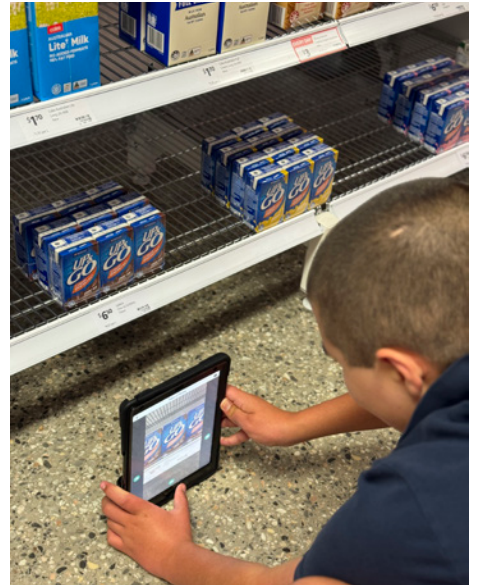
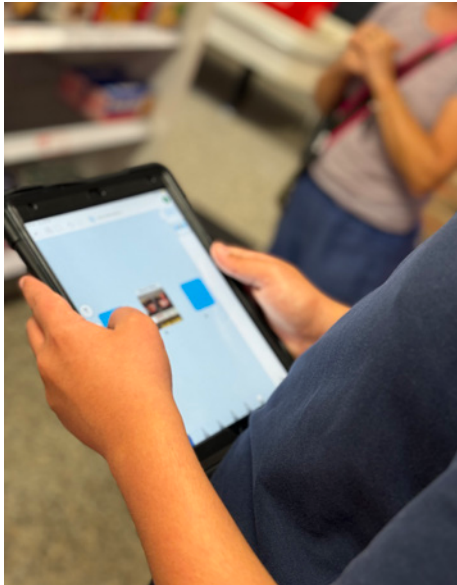
In 2017 the school was able to purchase neighbouring land. In 2020 the construction of the Dominic Centre (new K-6 classrooms) was completed and the Catherine Centre (Years 7-12 classrooms) will open in 2024. These two developments will accommodate specialised teaching and learning spaces needed for education in the 21st century in a specialist setting for students with a disability across K-12.

With your support the dream of you - our parents and community - can now be brought to tangible reality!





# HIGH SCHOOL HIGHLIGHTS



Seahorse Class enjoys visiting St Lucy's Coles Shop each week on a Tuesday morning. The visits to Coles bring the opportunity to apply a range of skills across subjects and develop social skills and positive interaction approaches.

Students in Seahorse make a purchase each week as well as engage in activities that stem across Literacy and Numeracy learning. This week, students completed an activity on Seesaw choosing items from Coles and identifying the prices. Later on in the day, the students used the information to develop a shopping list and delve deeper into foundational skills by creating a budget and identifying the money required to make the hypothetical purchase.

Seahorse Class love practising their register skills, applying classroom learning in a practical setting, and completing post-school experiences right here at St Lucy's. We look forward to using Coles for more learning as we continue forward in 2024.

## CONTACTS AT ST LUCY'S

Dear Parents  
Just a reminder:



If you need to advise us of any changes to your child/young persons medications please email:

**Medical@stlucys.nsw.edu.au**

If you need to advise us of any changes to your child/young/ persons drop off or pick up please email:

**Absent@stlucys.nsw.edu.au**

We thank you in advance for your assistance in keeping the school notified of the most up to date information.

The Admin & Medical Team

## UPDATED EMAIL ADDRESSES

If you have updated you email address recently or are not receiving emails from your class or the school, please email Maria Manzatti: **mariam@stlucys.nsw.edu.au** and update your detials via the Parent Lounge.

This will ensure you continue to receive all correspondence from St Lucy's.

## Install the App in 4 easy steps!



This free school app keeps parents up to date with School Communications including alerts that may arise and is another way to preview our School Newsletter.

1. Open the Apple App Store or the Google Play Store and search for 'Audiri'. Install the app.
2. Create an account and follow the prompts. Click 'Sign up'. Enter your email address, create a password and click on 'Sign up'. A confirmation email will be sent to confirm your account. Open the confirmation email and confirm your account.
3. Open the app, and click 'Add/Remove'. Type your school's name and press enter.
4. Tap the + icon to add. Now you can see your school, under My Schools & Services.



### Search Audiri in the app store



**audiri.com.au**



## ST LUCY'S SOCIAL MEDIA

St Lucy's social media platforms are a great way to see what is happening around the school as well as see upcoming workshops or events that may be of interest to you.



You can follow **St Lucy's Facebook page** by using the following link:

<https://www.facebook.com/STLUCYSSCHOOL>



You can follow **St Lucy's Instagram page** by using the following link:

[https://www.instagram.com/stlucysschool\\_wahroonga/](https://www.instagram.com/stlucysschool_wahroonga/)



### St Lucy's P&F Facebook page.

The Parents & Friends have set up a closed Facebook page for parents to message useful information to each other.

If you would like to join this closed group please see the ad below. Only parents of enrolled students are members.




## Join Our Facebook Community

**How to find our group:**  
Search for "St Lucy's Parents and Friends Community" or follow the link <https://www.facebook.com/groups/283397009022692> after answering some questions, an admin member will verify and approve your access.

**About our private Facebook group:** it's accessible only to parents & guardians of currently enrolled students at St Lucy's School. Created and maintained by parents, this group is a fun, helpful and safe place to connect with other parents. With the aim of building rapport, creating opportunities to connect and strengthen our school community.

**The Group Rules are simple:**

1. Always follow the Parent Code of Conduct.
2. No School Grievances
3. Be Kind and Courteous
4. No Promotions or Spam
5. Respect Everyone's Privacy
6. We're all in this together



JOIN NOW





Alessandra Picone  
Head of Creative Arts

# ST LUCY'S SCHOOL OPEN DAYS



**St Lucy's is a special education primary school and high school for children with disabilities located in Wahroonga on Sydney's North Shore.**

We invite you to one of our Open Days to see how your child will benefit from St Lucy's intensive instruction in: literacy, numeracy, social and emotional competence and independence skills in a dynamic and creative environment.

For more information contact the Enrolments Manager on 8355 3157 or [enrol@stlucys.nsw.edu.au](mailto:enrol@stlucys.nsw.edu.au). Applications close 19 May 2024.

## ST LUCY'S 2024 OPEN DAY SESSIONS:

### WAHROONGA CAMPUS St Lucy's School, 21 Cleveland Street, Wahroonga

<b>Tuesday 12 March</b>	K-6 Open Day #1	9.15am -11.00am
<b>Wednesday 13 March</b>	High School Open Day	9.15am -11.00am
<b>Wednesday 27 March</b>	K-6 Open Day #2	9.15am -11.00am
<b>Tuesday 9 April</b>	Twilight Tour	4.30pm -6.00pm

### NARRABEEN CAMPUS St Joseph's Primary School, 108 Ocean St, Narrabeen

<b>Tuesday 19 March</b>	Satellite Class Open Day	9.00am -10.30am
-------------------------	--------------------------	-----------------

**To book an Open Day session, visit**

<https://www.stlucys.nsw.edu.au/enrolment-open-day-special-needs-school/>



**JOY | COMMUNITY | COURAGE | TRUTH**

[www.stlucys.nsw.edu.au](http://www.stlucys.nsw.edu.au)



## MISSION AND IDENTITY

### Sacramental Information Evening

If your child is baptised in the Roman Catholic tradition, is seven years of age or over, and you are interested in them receiving the sacraments of Confirmation, First Communion or First Reconciliation, you are warmly invited to attend our Sacramental Information Evening on Thursday, May 9 at 6pm in the Possibility Space at St Lucy's Wahroonga. The sacraments are administered through our local parish, Holy Name, Wahroonga.

If you would like further information about the sacraments or would like to discuss your child's participation, please do not hesitate to contact me at the College or email [johnh@stlucys.nsw.edu.au](mailto:johnh@stlucys.nsw.edu.au)

Click [here](#) to register your child's interest in receiving the Sacraments.

### Ash Wednesday

The school community participated in our Ash Wednesday Liturgy in their classes on Wednesday, 14 March. A big thank you to the Chimpanzee Class for preparing the Liturgy.

### Harmony Week (18-24 March)

On Thursday, 21 March, the school will celebrate Harmony Day. Harmony Week is a celebration that recognises our diversity and brings together Australians from all different backgrounds. We also ask families to make a gold coin donation on this day for Caritas Australia.

This year, we will be giving our students a *silicon* Harmony Bracelet. Please advise your class teacher if you **do not** want your child to receive this bracelet.

John Hamey  
Acting Head of Mission & Identity

## ST LUCY'S NEEDS SWIMMING VOLUNTEERS



Term 1 and Term 4 2024

### Are you interested in volunteering at St Lucy's School as part of our swimming program?

The aim of swimming program is to build confidence in the water, improve swimming techniques while also increasing muscle strength and joint mobility.

**WHAT WE NEED FROM YOU:**

- 2 hours of volunteer time each week (2 classes) to assist the PE Teachers in our outdoor heated pool for 7 weeks in Term 1, 2024 February and March and possibly again in Term 4 2024 October/November

Working With Children Check • Double vaccinated for Covid-19

*No experience necessary just a willingness to learn and have fun!*

Please email [volunteer@stlucys.nsw.edu.au](mailto:volunteer@stlucys.nsw.edu.au)





# STAR OF THE WEEK PRIMARY AWARDS



## STAR OF THE WEEK (WEEK 3)

Axolotyl	Caleb Frizelle	Leopard	Brydi Mara & Eric McCarroll
Beluga	Elijah El-Agha	Lion	Kyson Tian
Bilby	Ryder Alexander	Narwhal	Inika Sandman
Bonobo	Izzy McDonald	Otter	Corey Beadman
Chimpanzee	Rafael Birkett	Panda	Monty McNeil
Elephant	Quinn Markham	Penguin	Ethan Lau
Fox	Brandon Polito	Rhino	Hudson Puklowski
Glider	Chloe Elder	Sloth	Bronte Westcott Mayorga
Hippo	Hannah Rashid	Vaquita	Paxson Gakuba

## STAR OF THE WEEK (WEEK 4)

Axolotyl	Leo Donath-Hale	Leopard	Rosie Heath
Beluga	Dwayne Boyle	Narwhal	Eva Quinn
Bilby	Elliot Dinsdale	Otter	Sawyer Langan-Stark
Bonobo	Evan Chen	Panda	Monty McNeil/ Jade Merrett
Chimpanzee	Natalie Eng	Penguin	Koh Chan Hachigo-Doan
Elephant	Zoe Sallansonnet	Rhino	Benjamin Sukkar
Fox	Dylan Farmer	Sloth	Yug Baral
Glider	Ari Sharma	Vaquita	Sasha Lipworth



## HIGH SCHOOL MERIT AWARDS



### MERIT AWARDS WEEK 3

Gorilla	Oliver Whittaker	Quokka	Bradley Chien
Iguana	Jake Townsend	Seahorse	Oscar Hay
Jaguar	Matthew Threlfo	Tiger	Joshua Lawrence-Slater
Ocelot	Daniel O'Connor & Oliver D'Souza	Tuatara	Oliver Pride
Potoroo	Noel Ansulam	Wolf	Poppy Botheras

### MERIT AWARDS WEEK 4

Gorilla	Owen Evans	Seahorse	Oscar Hay
Iguana	Karuka Uthayakumaran	Tiger	Michelle Law
Jaguar	Maggie Noonan	Tuatara	Nikki Herbert
Ocelot	Ayden Lacana	Turtle	Jordan Szeto
Potoroo	Madison Garcia	Wolf	Nikita Walker
Quokka	Benson Hiser		





## ST LUCY'S PARENT "WALK and TALK"

Get off to a great start this school year and make the most of the opportunity to tick off two important wellbeing essentials (at the same time)! Exercise and connect with others.

When: Tuesdays (unless raining heavily)  
 Where: Meet at St Lucy's front gate (Cleveland Street Wahroonga)  
 Time: 9.00am-9.45am. Prams and dogs welcome.

If you would like to come along or know more please email [familysupport@stlucys.nsw.edu.au](mailto:familysupport@stlucys.nsw.edu.au) or call/text Justine on 0456 681 710.



## ST LUCY'S "BEACHES PARENT WALK and TALK"

When: Thursdays (unless raining heavily)  
 Where: St Joseph's Primary School (Lagoon Street Narrabeen)  
 Time: 8.50am-9.50am  
 Who: Any parent of St Lucy's School; prams and dogs also welcome.

If you would like to come along or know more please email [familysupport@stlucys.nsw.edu.au](mailto:familysupport@stlucys.nsw.edu.au) or call/text Justine on 0456 681 710.

“Please don’t delay, arrange any school holiday supports today!”



Sahara School Holiday Program is a fantastic way for children to make the most of their school holiday period. With activities designed to engage them and encourage them to explore the world around them, participants will have the opportunity to step outside of their homes and enjoy new experiences with their peers.

To ensure the safety and comfort of all participants, each child is paired with a qualified Disability Support Worker who shares their interests and passions. This ensures that every child can enjoy their holiday to the fullest with the appropriate level of care and support.

Whether it's trying a new sport, exploring a local museum, or learning a new skill, the Sahara School Holiday Program offers a wide range of activities that cater to every child's interests. This program provides a wonderful opportunity for children to make new friends, develop new skills, and have fun while doing it.

hello@careculture.com.au 0497 941181



# Café Culture

Home About Us Services + FAQ

Get Started



Home » Services



## School Holiday Programs

Our School Holiday Programs are a great opportunity for participants to meet new friends, experience new adventures, and explore the community in a supportive and safe space after another big term at school.

Here are some of the fun things we get up to:

- Circus & Shows
- Fruit Picking
- Zoo Visits
- Inclusive Play Spaces

Get in touch for our current activity schedule!

Click Here

Disclaimer: While we are aware of and are happy to let you know about support services, we are not endorsing these services and cannot promise you that the services are suitable for your child or family's needs. It is up to you to make your own enquiries and decide whether a service is suitable for your child and your family.





## Tailored care

[Click Here](#)

Tribe specializes in individual goal-oriented disability support, working closely with you to customize the best services for an optimal experience.

Disability Support Central Coast | Sydney Hills |  
Wollongong



## Munchkins.

[Click Here](#)

**We are so excited to share with you a new element to our CMcare team - Munchkins!**

This program features all of the young members of our CMcare team with age appropriate activities and support. We will be adding school holiday programs coming in April 2024. Our goal is to break down the barriers for young people with disabilities as they grow and evolve.

# SCHOOL HOLIDAY PROGRAM

[Click Here](#)


**What Ability** 

## CAMPS

At What Ability camps, participants are provided with 1:1 support in a relaxed, group environment for between 2 days and 1 night, up to 7 days and 6 nights away from home, depending on support needs.

Here they are able to build meaningful friendships and develop independence through fun-filled social opportunities.

Time away from home is such an integral part of growing up. Not just for the participant but also for their families.

That's why here at What Ability we believe camps can provide our participants with opportunities and experiences that allow them to thrive and flourish to their full potential, all whilst having fun.

Camps are filled with fun activities like jet-skiing, beach days, bushwalks, caring for and feeding animals, water slides, cooking meals and baking, campfires and roasting marshmallows, family style dinners and movie nights.

Camp gives participants a safe place, where they can relax, be themselves and grow as individuals... and as always happiness comes first!

[NSW Camp Dates 2024](#)

Disclaimer: While we are aware of and are happy to let you know about support services, we are not endorsing these services and cannot promise you that the services are suitable for your child or family's needs. It is up to you to make your own enquiries and decide whether a service is suitable for your child and your family.



## CURA DISABILITY SUPPORT SERVICES

Your reliable disability support service.



### WHO ARE WE

WE ARE A DEDICATED DISABILITY SUPPORT SERVICE LOCATED IN SYDNEY. WE UNDERSTAND THE IMPORTANCE OF COMPREHENSIVE SUPPORT THAT IS AVAILABLE WHENEVER IT'S NEEDED. THAT'S WHY WE OFFER OUR SERVICES 7 DAYS A WEEK, BOTH DURING THE DAY AND OVERNIGHT.

### WHAT DO WE DO

IN THE COMFORT OF THEIR HOME, WE PROVIDE A RANGE OF PERSONALISED ASSISTANCE. OUR COMPASSIONATE TEAM IS TRAINED TO ASSIST WITH LIGHT HOUSEWORK, SHOPPING, MEAL PREPARATION, SHOWERING, TOILETING, DRESSING, AND TRANSPORTATION TO AND FROM APPOINTMENTS/ SCHOOL. WE PRIORITISE CREATING A SAFE AND NURTURING ENVIRONMENT WHERE PARTICIPANTS CAN THRIVE AND MAINTAIN THEIR INDEPENDENCE.

**CURA**  
DISABILITY SUPPORT

### WHAT MAKES US DIFFERENT?



OUR COMMITMENT TO BUILDING MEANINGFUL CONNECTIONS WITH OUR PARTICIPANTS AND THEIR FAMILIES. WE BELIEVE IN FOSTERING A SENSE OF BELONGING AND COMMUNITY, AND ENCOURAGE SOCIAL ENGAGEMENT THROUGH COMMUNITY ACCESS. WE ENSURE THAT EVERY EXPERIENCE IS ENRICHING AND ENJOYABLE FOR OUR PARTICIPANTS.



## We can connect you with local Support Workers



Julie, MyCareSpace Connections Team

The search for the right **Support Worker** doesn't have to be challenging.

Our knowledgeable and friendly **Connections Team** is here to make your life a lot easier.

Simply **provide us with a few details** and our team will **give you a callback** with options for **local, reliable Support Workers** that match your needs.

So, what are you waiting for? **Let's match you with the right support worker!**

## Personalised support, tailored to you

Tired of support services that don't truly meet your needs? Our Personalised Support Services team is all about tailoring your support to your needs and preferences.

**We know good support is unique to you, and we're here to make it happen.**



### Support getting started

Get help with creating your profile, using the platform and building your initial team, it's a great way to build confidence in managing your support independently!



### Personalised help\*

One personal relationship manager for all your needs. They'll get to know you, and be your primary point of contact for all things Hireup.



### Managing your team\*

We'll find and train support workers and build your team to best suit you and your needs, including arranging last-minute support.



### Handling your admin\*

We can help take care of the admin, including invoicing, rostering and approving your bookings, so you can spend more time living your life.

**Ready to experience the difference Hireup's Personalised Support Services team can make in your life?**

**Your journey to better support starts here.**

[Book a call](#)



# Sony Camp

Pymble Ladies' College and Shore are proud to co-host a four-day 'live-in' holiday camp for children with a physical, mental or developmental disability.



## Sony Camp will...

- provide children with a range of fun-filled activities to excite, amaze and amuse
- offer respite care to families in the busy lead-up to Christmas
- provide our senior students an opportunity to learn through serving others
- provide a fun camp for children with disabilities at no cost to parents.

## Sony Camp will...

- provide 25 places for school-aged children from Years 2 and above, who have a physical, mental or developmental disability
- be accommodated in the high quality Boarding Houses of Pymble and Shore
- support each camper with two dedicated and caring companions at all times.

## The Companions

- The most committed and dedicated senior students will be selected through a rigorous application process to be companions at this camp.
- Our companions will be trained in the various aspects of their role and supported at all times by professional medical and teaching staff from both schools and parent volunteers.

## Medical Support

- Registered nurses will be on duty for the duration of the camp and doctors on call 24 hours a day.

## How to apply

Visit [pymblelc.nsw.edu.au/community-and-events/sony-camp/](http://pymblelc.nsw.edu.au/community-and-events/sony-camp/) to register online.

For further information on the Sony Camp, please email [sonycamp@pymblelc.nsw.edu.au](mailto:sonycamp@pymblelc.nsw.edu.au) or call Sony Camp Co-ordinator Mariel Lombard on (02) 9855 7610.

*Pymble Ladies' College*

[pymblelc.nsw.edu.au](http://pymblelc.nsw.edu.au)

Avon Road Pymble NSW 2073  
PO Box 136 North Ryde BC NSW 1670 Australia  
+61 2 9855 7799

A SCHOOL OF THE UNITING CHURCH  
ACN 645 100 670 | CRICOS 03288K



PROUDLY HOSTED BY

*Pymble Ladies' College*







16-17 MARCH  
Sydney International Convention Centre



FREE  
ENTRY

### When:

Saturday 16 March 2024 - 10am to 4pm

Sunday 17 March 2024 - 10am to 3pm

**Where:** International Convention Centre, Darling Harbour - Hall 1

**Cost:** FREE to attend, tickets essential, hit the button below to get yours now.

### Why our expos are a must visit

There really is something for everyone at our events; from assistive technology and devices for physical disabilities, sensory shopping and supports for our neurodiverse families, NDIS plan assistance, support organisations, peak bodies, therapy providers and so much more.

Join us for two days of discovery among over 150 product and service providers all under one roof where you'll be able to chat to experts; gather information; touch, try out and purchase; plus there's also fabulous entertainment for the kids:

- Enjoy a line-up of performers ready to delight young and old
- Unwind in our sensory-friendly zone
- Immerse yourself in the fun, sports, and chill zones, ensuring a day full of fun and entertainment
- And loads more....

REGISTER FOR TICKETS

Disclaimer: While we are aware of and are happy to let you know about support services, we are not endorsing these services and cannot promise you that the services are suitable for your child or family's needs. It is up to you to make your own enquiries and decide whether a service is suitable for your child and your family.