



ST LUCY'S SCHOOL NEWSLETTER

In the Catholic Dominican tradition. A community enriched by difference;
inspiring learning for a life of purpose

JOY | COMMUNITY | COURAGE | TRUTH



FROM THE PRINCIPAL

Visit by The NSW Legislative Council Committee:

A Portfolio Committee of the Legislative Council examining the NSW government response to the Federal Disability Royal Commission recommendation to phase out Special Needs Schools and Settings visited St Lucy's last week. As you would understand this was a great opportunity for us to lobby (on your behalf) for the retention and indeed expansion of what St Lucy's offers as a special school setting for the public good of education and for families of students with a disability. The Committee visited a High School class and saw the authentic reality of a St Lucy's education and setting and the supports in place to properly cater to the needs of our students and their different interests and abilities (staffing, interactions of care, architectural needs across the campus and specifically in the classrooms). We also had the opportunity to talk to the Committee members individually and together during a tour of the campus. They commented that they found the visit most informative and instructive and from our perspective it appeared that their eyes may have been opened to the necessity of special education and settings in the choices for parents within the educational offerings across NSW. We await their findings in due course and recommendations to NSW government.

Meanwhile the Committee remains open to hearing from parents of students with a disability across St Lucy's and especially about why you transitioned to St Lucy's for your child especially if you had been in a mainstream setting previously.

If you wish to take up this opportunity please write a one paragraph submission about your educational experience and send it to Patricia McCarthy patriciam@stlucys.nsw.edu.au and it will be included in the submission to the Committee from the School. Submissions need to be sent to Patricia by the end of Term to be included.

Congratulations Sister Helen Merrin

Recently Sr Helen, our Chaplain, was acknowledged and awarded an OAM in the King's Birthday Honor's list. Helen rightly received this honour for her work in Catholic education as well as at St Lucy's in disability education. Congratulations Helen! Richly deserved.



21 June 2024

TERM 2

Friday 21 June

Central Coast Mum's night
Elanora Hotel, P&F Event 6.30pm

Tuesday 25 June

MyTime Wahroonga (online)
7.00pm - 9.00pm

Thursday 27 June

MyTime Men's Social Evening
Parramatta
6.30pm-8.30pm

Friday 28 June

Sydney Mum's night
P&F Event 6.30pm
Change of venue - now at The Sawmill

Friday 28 June

Term 2 assembly and end of term BBQ
Term concludes for students

New Satellite Location – St Lucy’s @ Santa Sabina, Strathfield

During Term 4 this year a transition program will commence for students in the inner western suburbs at our new satellite class at Santa Sabina. We are starting with a Kindergarten class in 2025 (10 students and 2 educators) and growing up to three classes of students across K-4 in time. This is very exciting for those families in the inner western suburbs who wish to have a supported environment with the best of both worlds (St Lucy’s and mainstream) to commence ‘big’ school. If you know of any possible families in that area who have children suited to satellite who are looking for a smaller class size with specialised education support for the first few years of school before transitioning to mainstream then please refer them to our website under Enrolments as well as urge them to contact Kerrie Dietz, our Enrolments Manager.



St Lucy’s satellite class - Dominic building, Santa Sabina

The Big Move:

We are in the midst of getting ready to move all classes during these holidays into our new specialised facilities in readiness for students to return on Tuesday 23 July. This will be the first time all classes at Wahroonga will be able to enjoy their specially designed classroom spaces (core classroom as well as two adjacent learning spaces – one for regulation and one for small group learning) for the start of Term 3. This is very exciting for our whole community of educators and learners alike. Thank you to all the staff for their willingness to make the move in the holidays as well as COWYN Building Group for the completion of this part of the project – the Catherine Centre for our High School. We are looking forward to the commencement of the Veritas refurbishments in Semester 2.



St Lucy’s Tax Appeal

With 9 days to go until the End of Financial Year, please consider sharing this link <https://givenow.com.au/stlucys-tax-appeal> with your friends, family and work colleagues to make a tax-deductible gift to support the Veritas Refurbishment. Building will begin in July and we anticipate its opening in 2025. These purpose-built Vocational Education Training areas will provide essential learning facilities to help students learn life-long skills and build confidence in independence.

Scan the QR Code if you wish to donate



ST LUCY'S EOFY ANNUAL APPEAL

VERITAS
ST LUCY'S

Help St Lucy's School refurbish facilities that teach life skills

Donate before 30 June for your tax-deductible receipt

Pyjama Day to End Term 2:

Hope you enjoyed sending your children and young people to school today for Pyjama Day. It is always such fun to see dress ups like this and enjoy some photos on page 3.

I trust you and your family take some time together in whatever way you can during the 3 week holiday. Thank you once again, as parents and carers for your on-going support of the school during Term 2. We are all looking forward to getting the whole playground back next term and moving in to our new facilities. Take care and may God bless you all at this holiday time.

David Raphael
Principal



ST LUCY'S P&F

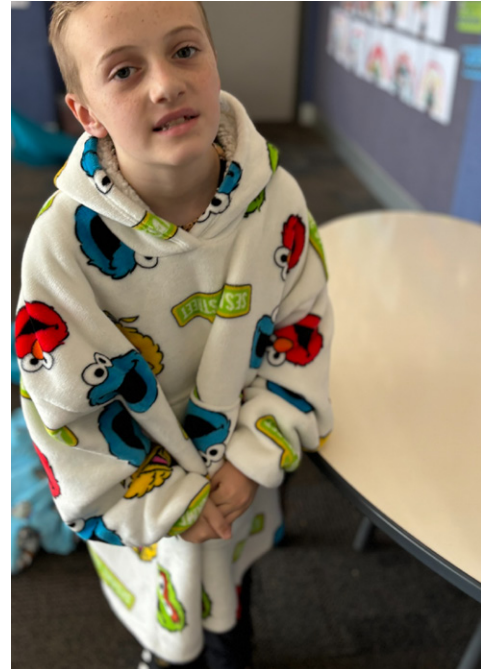
MUM'S NIGHT OUT

JOIN US FOR AN EVENING OF FUN!

CENTRAL COAST MUMS
Friday 21 June Elanora Hotel - 41 Victoria Street, East Gosford NSW 2250
From: 6:30pm

SYDNEY MUMS
Friday 28 June The Sawmill 7 Duneba Ave, West Pymble NSW 2073
From: 6:30pm

PYJAMA DAY!





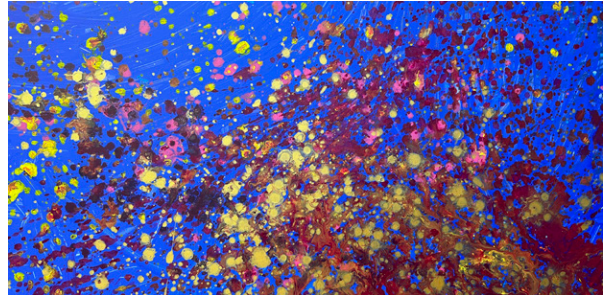
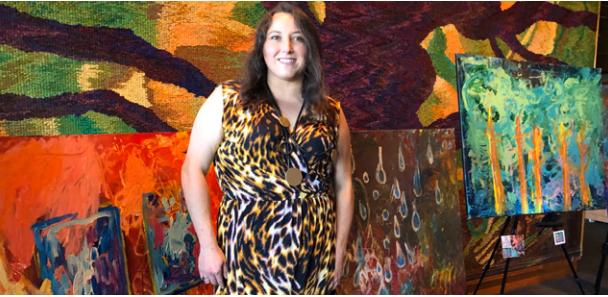
CREATIVE ARTS NEWS

We are saying farewell to Miss Marci Ordonez, one of our Visual Arts teachers, who is leaving us at the end of this term. Marci has been a part of the Creative Arts Team at St Lucy's for 8 years and has brought so much colour, glitter, and joy to the Studio and into the artistic journey of every student she has worked with.

With Marci's guidance, many beautiful artworks have been created by our students and we will miss her!

We wish Marci all the very best!

Alessandra Picone
Head of Creative Arts



Wellbeing Update

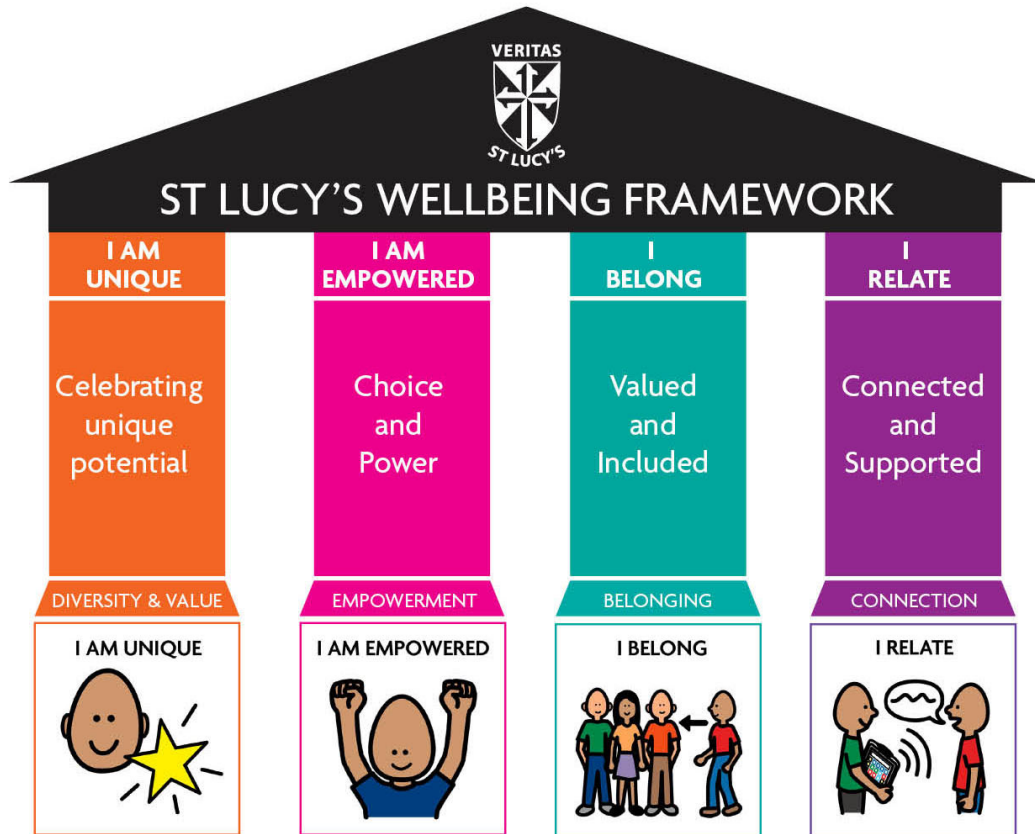
Here is our refreshed St Lucy's Student Wellbeing Framework and Definitions.

The process of developing the St Lucy's framework involved careful consideration of the Australian Student Wellbeing Framework which is evidence-based. Our aim is to have a framework the students can relate to and that is student centred with the "I statements".

Definitions are positive, strength-based statements. They are about the environment and culture of St Lucy's. The pillars are designed

so that students can develop an understanding of the skill focus over their time at St Lucy's.

The framework and definitions were introduced to the St Lucy's Community earlier in the year at the Parent Information Night. Our refreshed version below looks a little different to the original, with the addition of visuals and bolder colouring. Student feedback led to these changes, making the framework a collaborative document, something that students and staff are very excited about.



St Lucy's Student Wellbeing Framework - Definitions of Pillars



DIVERSITY AND VALUE

Students develop self-awareness and an understanding of their own strengths and the strengths of others. Student's uniqueness is celebrated with a focus on what each person brings to the school community.



EMPOWERMENT

Students develop skills towards independence to share their truth, make choices, and seek help. They are challenged to reach their potential in a culture where they feel seen, heard, understood, and respected.



BELONGING

Students and the people important to them, including their family, are valued members of the school community. They are supported in a positive, respectful and engaging culture.



CONNECTION

Students develop the skills to relate to others in a meaningful way. The connections made at school and in the wider community support students to be their best and to achieve their goals.

Wellbeing Update

At our assemblies each week in Term 2, we have focused on the Empowerment Pillar.

Students have been learning

- I can make my own choices
- I have the power to say 'yes' or 'no'
- My family, teacher and friends give me time to try and do things by myself.

Here are some photos of our Empowered students moving around the school independently



Michelle Le Patourel
Head of Wellbeing
Classroom Teacher

HIGH SCHOOL HIGHLIGHTS

Last Friday Georgia Knight, from Coles Turrumurra, came to St Lucy's to present the students who participated in the 'On the Job Training' Program with certificates in recognition of their hard work and dedication to the program.



Thank you **coles**

HIGH SCHOOL HIGHLIGHTS

Last Friday Georgia Knight, from Coles Turramurra, came St Lucy's to present the students who participated in the 'On the Job Training' Program with certificates in recognition of their hard work and dedication to the program.



Thank you **coles**

CITY2 SURF



Support St Lucy's School in the 2024 City2Surf

The World's Largest Fun Run - The City2Surf - will be back in Sydney on Sunday 11 August 2024. Bringing 80,000+ people together from all walks of life to run, jog, walk or stroll the iconic 14km course from Sydney CBD to Bondi Beach. Save the date for another spectacular year as we celebrate Sydney with live entertainment, food, training runs, fundraising and much more. We'll see you on the start line!

To register for City2Surf and support St Lucy's School please visit:

<https://city2surf24.grassrootz.com/st-lucy-s-school>



All funds raised for St Lucy's School will go towards purpose-built learning facilities to teach life skills for our students to become independent and contribute back to their communities.

STEPS TO REGISTER, DONATE OR FUNDRAISE

Click on the link and follow the steps:

<https://indd.adobe.com/view/b6732bbb-56c1-49a3-b0e2-5b4f3ef30d9f>

If you have any further questions please do not hesitate to contact juanitam@stlucys.nsw.edu.au



The Sun-Herald
CITY2 SURF

11 August 2024

*Donate to help
make a difference*

Join the St Lucy's
City2Surf Squad!





STAR OF THE WEEK PRIMARY AWARDS



STAR OF THE WEEK (WEEK 7)

Axolotyl	Andrea Manaday	Leopard	Daniel Shim
Beluga	Olivia Ma	Lion	Kyson Tian
Bilby	Elliot Dinsdale	Narwhal	Luca Cohen
Bonobo	Fred Arnison	Otter	Leo Hart
Chimpanzee	Lily Vergot	Panda	Jade Merrett
Elephant	Isabel Jefferson	Penguin	Koh Chan Hachigo-Doan
Fox	Oskar Groenewald	Rhino	Soheil Naderloo
Glider	Chloe Elder	Sloth	Madeline Pak
Hippo	Connor Anderson	Vaquita	Ruby Baron

STAR OF THE WEEK (WEEK 8)

Axolotyl	Billy Garrod	Leopard	Eric McCarroll
Beluga	Rayan Nowuram	Lion	Tommy Dean
Bilby	Juliette O'Sullivan	Narwhal	Maye Akra
Bonobo	Evan Chen	Otter	Stephen Tarantilis
Chimpanzee	James Huwazan	Panda	Annabelle Zabulic
Elephant	Ian Seo	Penguin	Mila White
Fox	Ethan Bortolussi	Rhino	Ben Sukkar
Glider	Archie Killian	Sloth	Kaius Jones
Hippo	Matthew McArthur	Vaquita	Elliot Huband



MERIT AWARDS WEEK 7

Gorilla	Oliver Whittaker	Seahorse	Campbell Dietz
Iguana	Karuka Uthayakumaran	Tiger	Addison Williams
Jaguar	Matthew Threlfo	Tuatara	Nikki Herbert
Ocelot	Tayla Tobin	Turtle	Polina Kulikova
Potoroo	Austin Sproats	Wolf	Samara Macklin
Quokka	Bensen Hiser		

MERIT AWARDS WEEK 8

Gorilla	Nicholas Antoun	Seahorse	Eddy Livingstone-Fogge
Iguana	Livia Maltby	Tiger	Anna Bray
Jaguar	Anna Simpson	Tuatara	Oliver Pride
Ocelot	Oliver D'Souza	Turtle	Jamie Hunter
Potoroo	Abigail O'Keefe	Wolf	Poppy Botheras
Quokka	Matthew Beadman		

Creating an Inclusive Life

WORKSHOP

ONLINE VIA ZOOM



Over two days: Monday 24
and Tuesday 25 June
9am - 1pm AEST



Many people with disability spend much of their lives in disability programs and potentially miss out on accessing a full life. **A clear vision and good planning are crucial** to ensure that people with disability experience authentic inclusion.

Imagine a life beyond disability services...

- Learn how people with disability can access the good things in life
- Identify and build on the valued roles that contribute to genuine inclusion
- Discover what true inclusion really looks like for people with disability.
- Develop a positive vision for a person with disability
- Practical strategies and tips on working with the community and/or services
- Explore what formal and informal supports look like and how to implement them

Who is this workshop for?

Anyone who wants the person with disability in their life to have much more than the limited opportunities offered by disability services. This includes people with disability, their parents, family members, allies and professionals.

The Inclusive Lives project aims to build the knowledge, skills and confidence of people with disability and their families, focusing on the importance and benefits of living a fully inclusive life.

Topics

- Understanding inclusion
- Let's think typical
- Barriers to Inclusion
- Vision strengthening
- Socially valued roles
- Self management

Bookings essential

www.ric.org.au/events/

\$35 - people with disability & families*

\$50 - professionals

**We don't want you to miss out, so if price is a barrier please give us a call.*

Register here



CONTACT US: 1800 774 764 or email info@ric.org.au



MyTime Wahroonga

MyTime is a peer support program for parents and carers of a child with a disability, chronic medical condition or other additional needs including developmental delay.

TUESDAY 25 JUNE (online)

7.00pm -9.00pm

Topic: Supporting siblings of children with disability

Facilitator: Terry Williamson

Join Zoom Meeting: <https://zoom.us/j/97212601077?pwd=LMIj419uEAOOrWJxabKP4JfhSa8Kb.1>

Meeting ID: 972 1260 1077 Passcode: 268469

EMAIL:

mytimewahroonga@gmail.com



It's support
for you



It's free to
join



Professional
support



Pre-school aged
children are welcome



mytime.net.au



MyTime Men's Social Evening

MyTime is a peer support program for parents and carers of a child with a disability, chronic medical condition or other additional needs including developmental delay.

Thursday 27 June 6.30pm - 8.30pm

WHERE:

Crown Hotel Parramatta
295 Church Street Parramatta 2150

<https://www.crownhotelparramatta.com.au>

Crown Hotel are generously providing a selection of pizzas and canapés as well as beverages during the session.

Table booking under Ross Hay.

PARKING:

Eat Street Council Car Park
30 George Street Parramatta

<https://pointparking.com.au/locations/eat-street-car-park/>

ParkRoyal Parramatta
30 Phillip Street Parramatta

<https://www.panpacific.com/en/hotels-and-resorts/pr-parramatta/facilities.html>

CONTACT: Warren Hopley mytimewahroonga@gmail.com to RSVP by 25 June



It's support
for you



It's free to
join



Professional
support



mytime.net.au



ST LUCY'S PARENT "WALK and TALK"

Make the most of the opportunity to tick off two important wellbeing essentials at the same time!
Exercise and connect with others

When: Tuesdays (unless raining heavily)
Where: Meet at St Lucy's front gate (Cleveland Street Wairoonga)
Time: 9.00am-9.45am. Prams and dogs welcome.

If you would like to come along or know more please email familysupport@stlucys.nsw.edu.au
or call/text Justine on 0456 681 710.



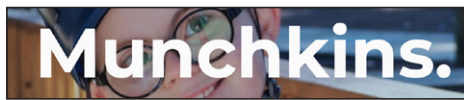
ST LUCY'S "BEACHES PARENT WALK and TALK"

When: Thursdays (unless raining heavily)
Where: St Joseph's Primary School (Lagoon Street Narrabeen)
Time: 8.50am-9.50am
Who: Any parent of St Lucy's School; prams and dogs also welcome.

If you would like to come along or know more please email familysupport@stlucys.nsw.edu.au
or call/text Justine on 0456 681 710.

SCHOOL HOLIDAY PROGRAMS

School holidays are just around the corner! Please don't delay and click on the logos below to confirm what each service provider has to offer.



Free fun workshop with the Parliament of NSW in the July school holidays
July 17, 9.15am-3.00pm • Children 8 to 12 years

Parliament of New South Wales

FREE SCHOOL HOLIDAY Drawing WORKSHOPS and chamber visit

Drawing democracy with David Conley



Disclaimer: While we are aware of and are happy to let you know about support services, we are not endorsing these services and cannot promise you that the services are suitable for your child or family's needs. It is up to you to make your own enquiries and decide whether a service is suitable for your child and your family.